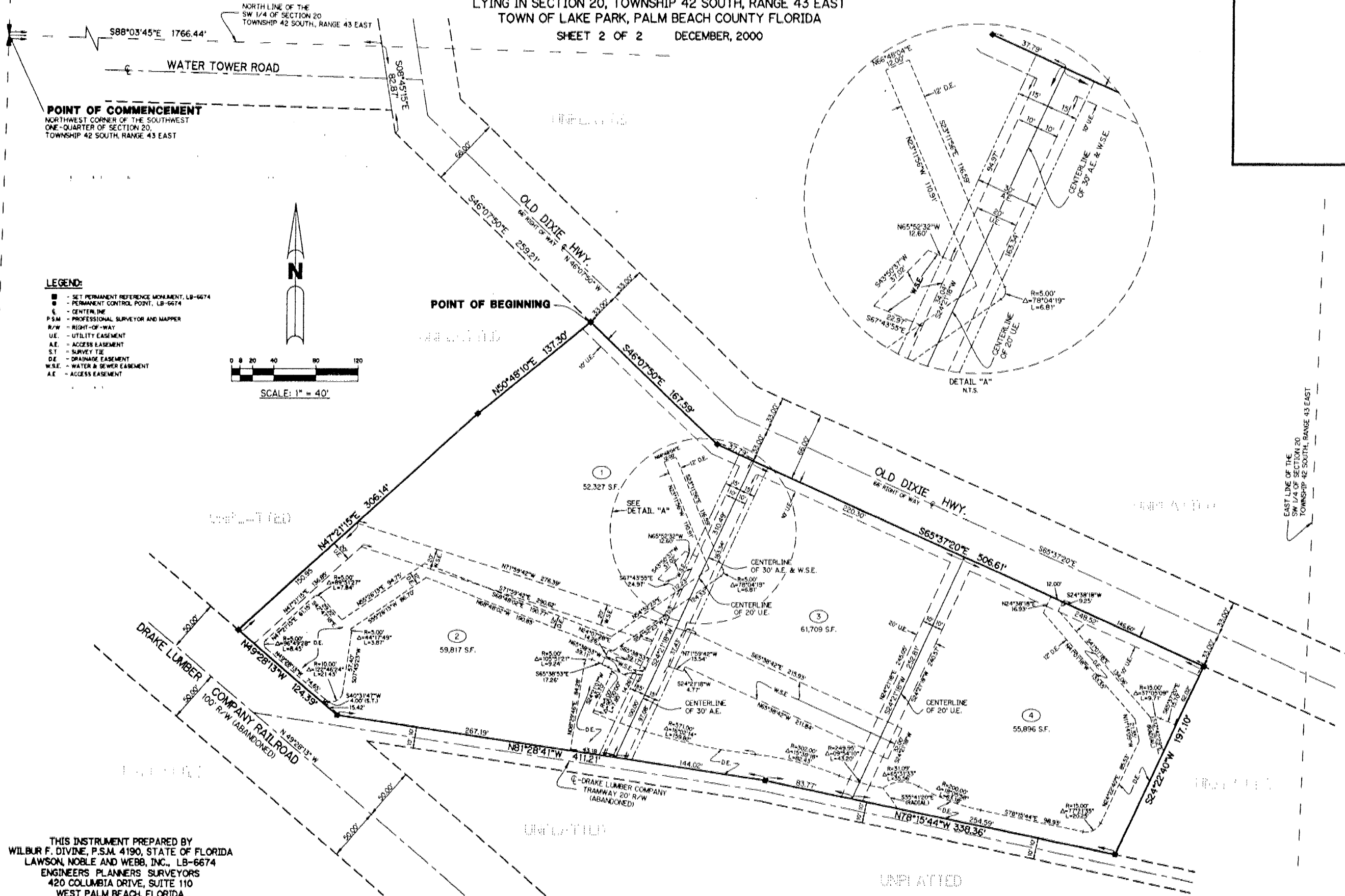


KELSEY BUSINESS PARK

LYING IN SECTION 20, TOWNSHIP 42 SOUTH, RANGE 43 EAST
TOWN OF LAKE PARK, PALM BEACH COUNTY FLORIDA

SHEET 2 OF 2 DECEMBER, 2000

60

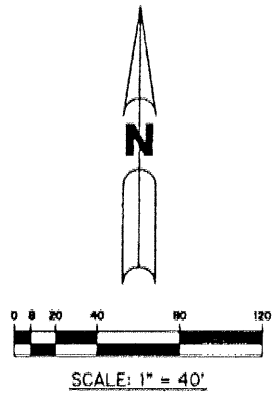


POINT OF COMMENCEMENT
NORTHWEST CORNER OF THE SOUTHWEST
ONE-QUARTER OF SECTION 20,
TOWNSHIP 42 SOUTH, RANGE 43 EAST

POINT OF BEGINNING

LEGEND:

- - SET PERMANENT REFERENCE MONUMENT, LB-6674
- - PERMANENT CONTROL POINT, LB-6674
- ⊕ - CENTERLINE
- P.S.M. - PROFESSIONAL SURVEYOR AND MAPPER
- R/W - RIGHT-OF-WAY
- U.E. - UTILITY EASEMENT
- A.E. - ACCESS EASEMENT
- ST - SURVEY TIE
- D.E. - DRAINAGE EASEMENT
- W.S.E. - WATER & SEWER EASEMENT
- A.C. - ACCESS EASEMENT



THIS INSTRUMENT PREPARED BY
WILBUR F. DIVINE, P.S.M. 4190, STATE OF FLORIDA
LAWSON, NOBLE AND WEBB, INC., LB-6674
ENGINEERS PLANNERS SURVEYORS
420 COLUMBIA DRIVE, SUITE 110
WEST PALM BEACH, FLORIDA

EAST LINE OF THE
SW 1/4 OF SECTION 20
TOWNSHIP 42 SOUTH, RANGE 43 EAST